

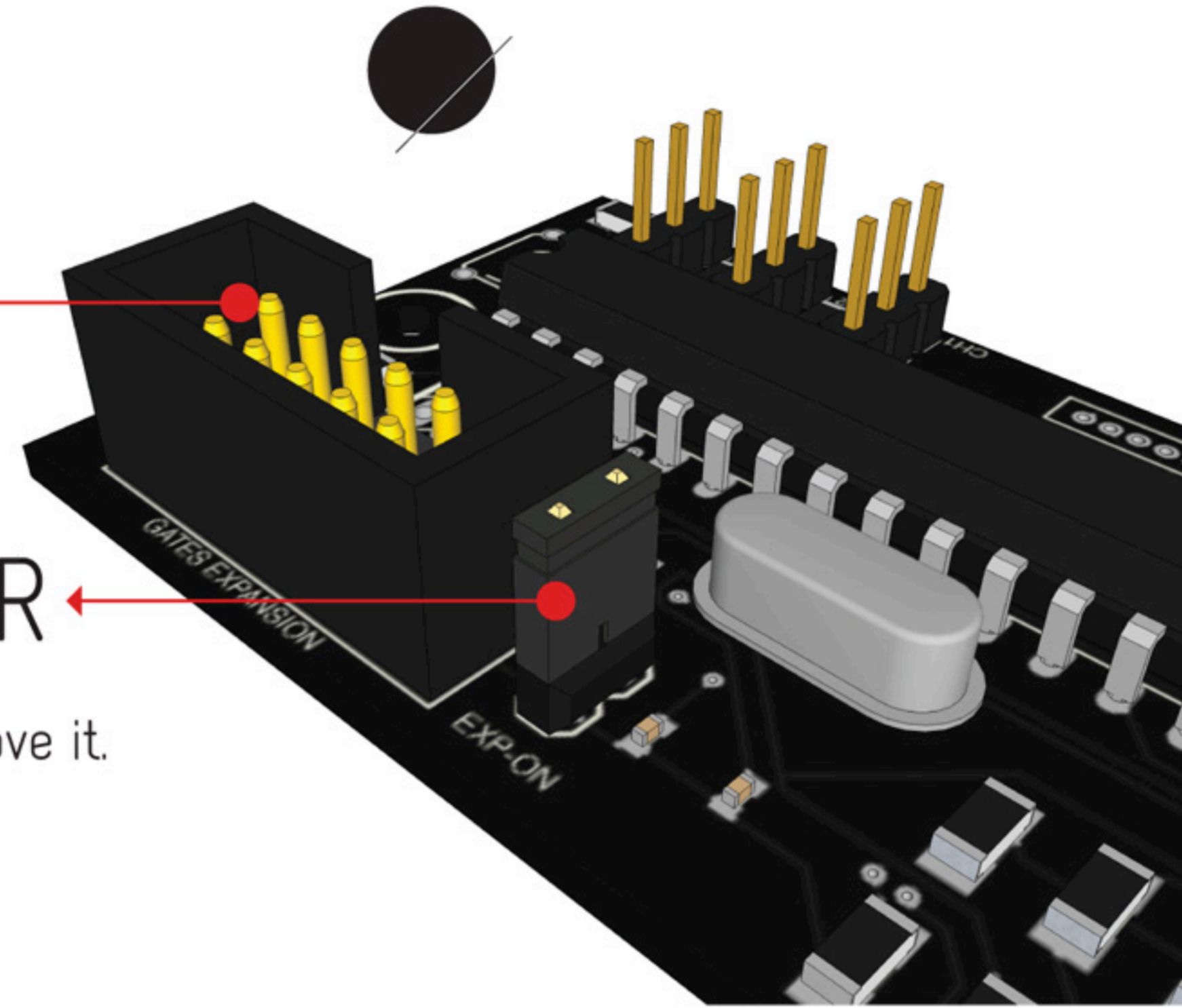
# ADDAC501B Complex Random Expansion

## EXPANSION CONNECTOR

Plug here one of the ribbon cables provided with your Expansion according to the instructions below.

## EXPANSION JUMPER

This Jumper Activates the Expansion.  
If not using the expansion please remove it.



## EXPANSION CABLE

There are 2 different versions of the ADDAC501 Complex Random, one has the Expansion Connector facing inwards and another with the Connector facing outwards. Only one cable will fit your configuration, with the Red Stripe Down check the appropriate cable for your Complex Random version.

